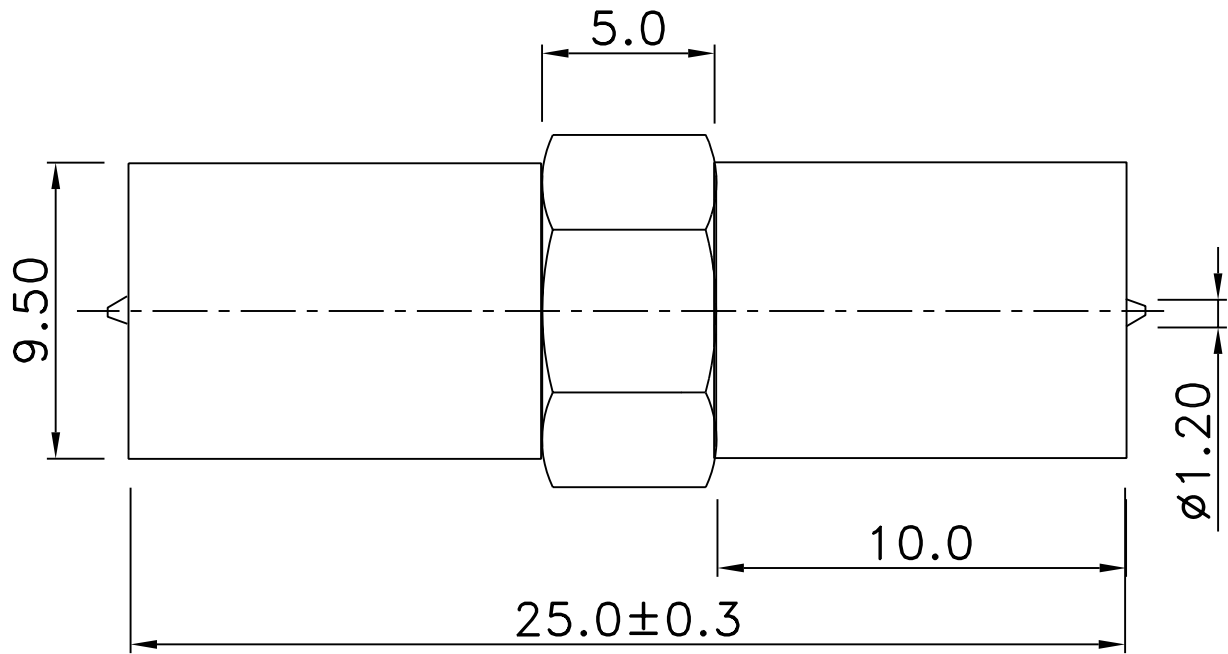



REV	DESCRIPTION	DRAWN	DATE



					UNLESS OTHERWISE SPECIFIED 1.REMOVE ALL BURRS. 2.BREAK ALL CONNERS & EDGES CO.15 MAX. 3.CHAMFER 1ST & LAST THREADS 45° 4.DIAMETERS ON COMMON CENTERS. TO BE CONCENTRIC WITHIN 0.1 T.I.R. 5.ALL DIMENSIONS ARE AFTER PLATING.	* MAJOR DIMENSION UNLESS OTHERWISE NOTED TOLERANCES 0.5-6=±0.2 6-30=±0.4 30-120=±0.6 120-315=±1.0 ANGLES=±1°				APPROVED		<div> Siretta Enabling Industrial IoT</div> <div>TITLE FME PLUG TO FME PLUG</div> <div>DRAWING NO. ADAPT/FMEM/FMEM</div> <div>REV A</div> <div>FILE NO.</div>	
3	INSULATOR	2	DELRIN	NONE						CHECKED			
2	PIN	1	BRASS	GOLD						DRAWN andrew			
1	BODY	1	BRASS	NICKEL						DRAWN DATE 03/06/17			
NO	Description	Q'ty	Material	Finish		SCALE	6/1	UNIT	MM	DRAWN DATE 03/06/17			