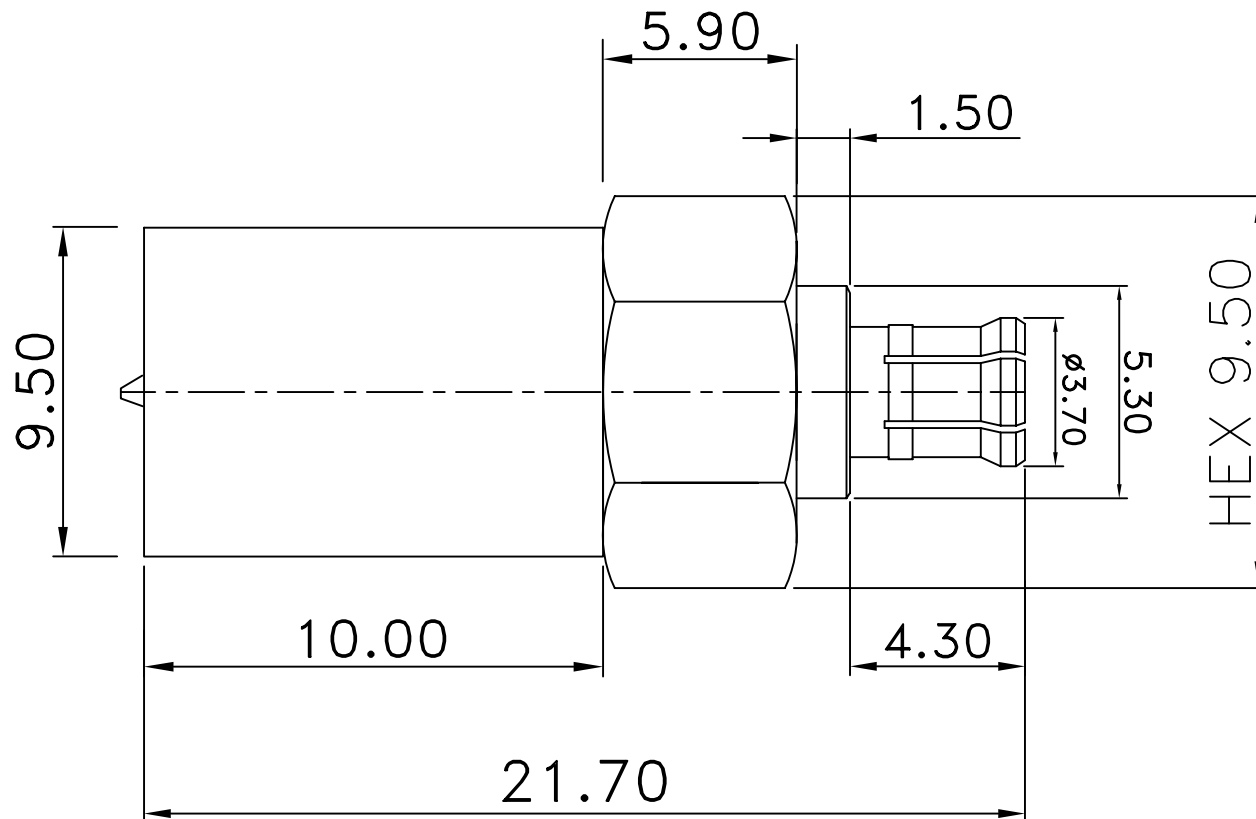



REV	DESCRIPTION	DRAWN	DATE



4	BODY	1	Be Cu	NICKEL	UNLESS OTHERWISE SPECIFIED 1.REMOVE ALL BURRS. 2.BREAK ALL CONNERS & EDGES CO.15 MAX. 3.CHAMFER 1ST & LAST THREADS 45°. 4.DIAMETERS ON COMMON CENTERS. TO BE CONCENTRIC WITHIN 0.1 T.I.R. 5.ALL DIMENSIONS ARE AFTER PLATING.	* MAJOR DIMENSION				APPROVED	<div> Enabling Industrial IoT</div>				
3	INSULATOR	2	TEFLON	NONE		UNLESS OTHERWISE NOTED TOLERANCES 0.5-6=±0.2 6-30=±0.4 30-120=±0.6 120-315=±1.0 ANGLES=±1°				CHECKED				TITLE	
2	PIN	1	BRASS	GOLD						DRAWN	andrew		MCX PLUG TO FME PLUG		
1	BODY	1	BRASS	NICKEL								DRAWING NO.		ADAPT/MCXM/FMEM	
NO	Description	Q'ty	Material	Finish		SCALE				6/1	UNIT	MM	DRAWN DATE 03/06/17		FILE NO.