



ZETA-N-LTE (EU)

4G / LTE (EU) Industrial Modem with GPIO

General Description



The ZETA-N-LTE (EU) is an industrial modem designed for regions of the world, where European frequencies are present. It will connect equipment to the 4G/LTE, 3G/UMTS & 2G / GSM cellular network. It has a 5 band LTE, dual band UMTS and dual band GPRS cellular engine, providing European frequency coverage.

The device offers a high level of functionality in a compact “plug and play” housing and provides RS232 & USB serial data interfaces in addition to a 10-way GPIO connector which offers a secondary TTL serial port, general purpose IO and an ADC.

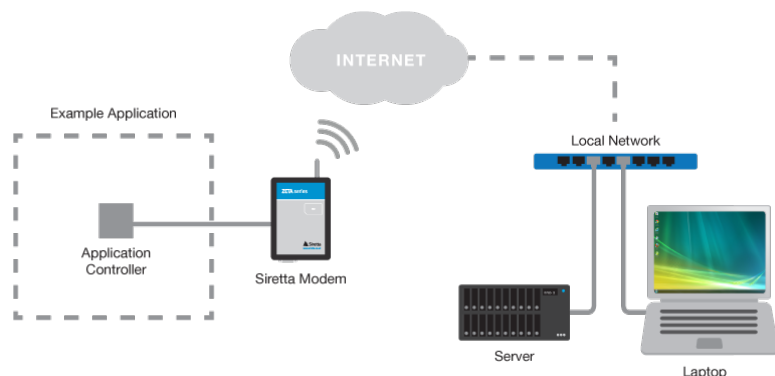
It is ideal for integrating in to a wide range of IoT applications that require reliable and stable data.

Features

2G GSM	3G UMTS	4G LTE	GPRS Enabled	CSD Dialup	SMS Enabled	EU Coverage
RS232 Serial	USB Serial	GPIO Interface				
>_ Embedded	FOTA Update	AT Commands	IP Services	SIM Toolkit	Win Linux/Mac	5-24V Industrial -40 +80 deg C

Featured Applications

- » CCTV
- » Video Surveillance
- » Car Parking Payment
- » Kiosks
- » Smart Cities
- » Alarm Notification Systems





ZETA-N-LTE (EU)

4G / LTE (EU) Industrial Modem with GPIO

General Features

- » 5 Bands LTE:
B1(2100), B3(1800), B7(2600), B8(900), B20(800)
- » 2 Bands UMTS/HSPA+:
B8(900), B1(2100)
- » 2 Bands GSM | GPRS:
B8(900) B3(1800)
- » SMS text over IMS
- » SIM Access Profile
- » SIM Application Tool Kit 3GPP TS 51.014
- » Control via standard AT commands 3GPP TS7.005.27.007
- » Extended AT command set
- » Serial port multiplexer 3GPP TS27.010
- » Built in UDP/TCP/FTP/SMTP stack

Interfaces

- » 1 x RS232 serial port interface (5-wire)
- » 1 x USB 2.0 FS
- » 1 x RJ12 power connection (5 - 42V)
Nominal supply 12V
Power on & power off control
- » 1 x SMA female cellular antenna connector
- » 1 x SIM card reader (push-push) 3V, 1.8V
- » 5 x GPIO
(Input 0-42V, Output 0-3.3V)
- » 1 x ADC (0-42V)
- » 1 x RS232 secondary serial port (3-wire TTL)
- » 3 x external LED status indicators (Blue, Red, Green)

Environmental

- » Dimensions: 93mm x 67mm x 28mm
- » Weight: 104 grams
- » Extended Temperature Range: -40 to +85 deg C

Data

- » LTE Cat.4
- » Uplink up to 50 Mbps
- » Downlink up to 150 Mbps

Approvals and Compliance

- » CE

Sensitivity

Output power

- » Class 3 (0.2 W, 23 dBm) @ LTE
- » Class 3 (0.25 W, 23 dBm) @ 3G
- » Class 4 (2W) @ GSM 900
- » Class 1 (1W) @ DCS 1800

Application Resources and Drivers

AppZone C

- » Programming language: C
- » IDE: Eclipse
- » Dedicated File System: 5MB
- » Separate App. RAM Space: 2MB

USB Drivers

- » Windows 7/8/10 driver support
- » Linux native support (CDC ACM)