

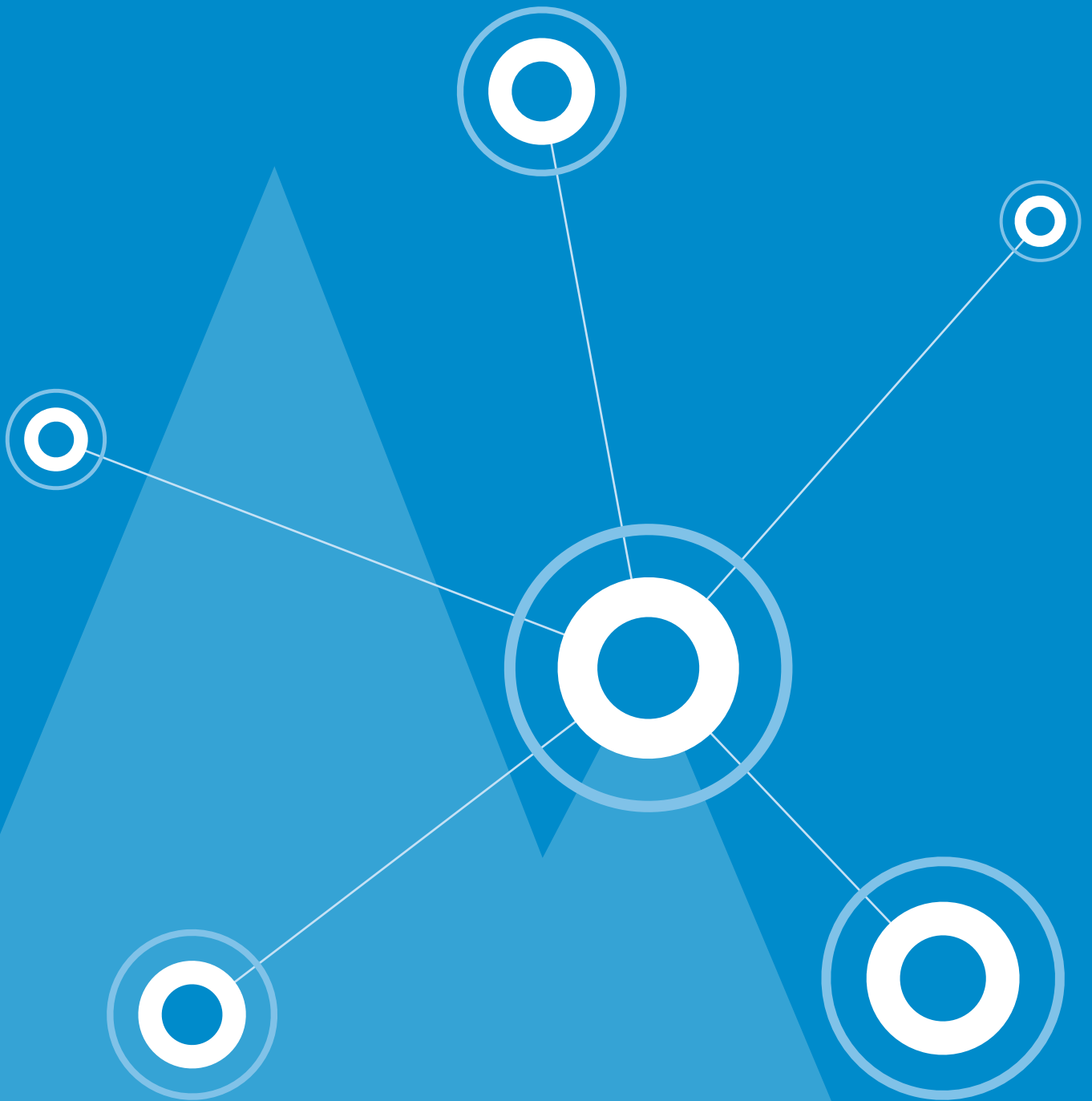


# SNYPER-LTE

CONSISTENCY BUILT ON RELIABILITY

## Family of 4G/LTE Cellular Signal Analysers

Find the best network to use in your installation



# SNYPER-LTE

## FAMILY OF PRODUCTS

WHEN RELIABILITY AND  
CONSISTENCY OF SIGNAL MATTERS

# ACHIEVE CONTINUED IOT CONNECTIVITY

## Reliability of IoT connections is key

A reliable connection is achieved by selecting the best network and choosing the right antenna.

### THINGS TO CONSIDER...

- Where is the nearest cell?
- Which network has the most availability?
- Is my antenna suitable for this site?
- Where do I get the strongest signal?



## A strong balanced signal is key to achieving a reliable connection

The SNYPER LTE family is a key tool in optimising uptime and improving resilience of cellular connected systems, leveraging high quality-of-service for your applications.

The SNYPER family of 4G/LTE Signal Strength Analysers is an evolution in cellular signal analysis with backward compatibility to 3G and 2G networks. The SNYPER-LTE family variants are used by installers and systems integrators to minimise installation issues relating to signal strength, network selection and antenna evaluation in their IoT solutions.



# RELIABLE AND ACCURATE CELLULAR SIGNAL ANALYSIS AND CELLULAR LOCATION WITH THE SNYPER-LTE FAMILY

## Find the best cell location **CONTINUOUSLY**

The SNYPER-LTE family of signal analysers will show you where the best cell site is located through its mapping portal\*. This will allow you to place a directional antenna in line of sight with your chosen cell for continuous, reliable connection.



### BENEFITS AT A GLANCE

- Wideband 2G/3G/4G antenna included
- Narrowband 2.6GHz/4G antenna included
- Multiple surveys to determine the best network availability over a long period
- Quick download of survey results to PC with HTML view for further analysis
- Results available in CSV
- Determine signal 'Hot Spots'
- Directional antenna alignment
- Mapping portal showing the cell tower distribution\*
- Equipment can be connected for "real life" testing
- Many power saving modes to extend battery life
- Sunlight readable colour display
- Intuitive menu system - access all features through easy menus
- Rugged, wipe clean enclosure



SNYPER-LTE+ Spectrum

\*Mapping Portal is a paid service offered by Siretta, and can be accessed via the HTML reports.

# FOR APPLICATIONS ACROSS INDUSTRIES REQUIRING CONSISTENT 4G NETWORKS

## Usage examples

Industrial, traffic management and infrastructure equipment is increasingly connected to the internet over mobile IoT networks.

The SNYPER-LTE family of products are invaluable tools used by installers, field service engineers and systems developers to ensure consistency of connection with new and deployed equipment ensuring maximum ROI.



### Traffic Management

Traffic signals, roadside signage and environmental monitoring all rely on cellular connectivity providing remote updates and pre-emptive fault management.



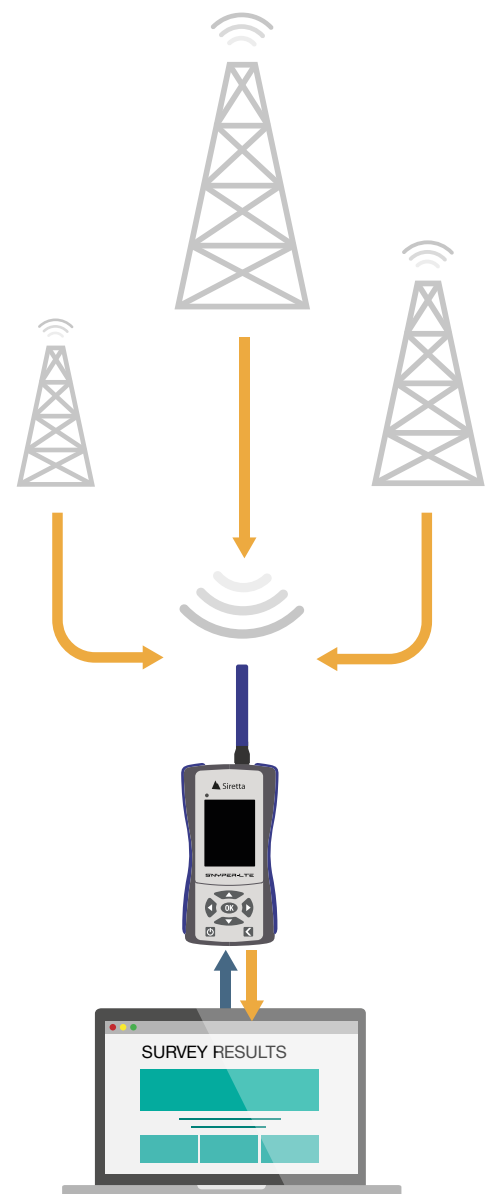
### Security Systems

IP cameras, door access and intrusion detection/monitoring systems rely on 4G connections for primary or backup connections.



### Industrial

Remotely sensing liquid and gas tanks, along with other factors such as pressure and heat, boosts the efficiency in operating industrial systems.





# SNYPER-LTE FAMILY FEATURES

## MAIN FEATURES OF SNYPER-LTE FAMILY

- 2G + 3G + 4G signal testing
- European or North American coverage
- Survey and store multiple surveys
- Download surveys and data via USB to PC/MAC
- Present survey data graphically in HTML format
- Post process results in CSV format
- liveSCAN features (Spectrum and Graphyte models)
  - Direction antenna alignment
  - Hot spot analysis
- Large capacity battery for long battery life
- Network availability and reliability
- Rugged and durable design
- Multi language

## ADDITIONAL FEATURES

- Large, easy to read, daylight viewable colour display
- Display customisable
- Intuitive menu system
- Usable in light rain conditions
- Wipe clean keypad
- Multiple power modes to extend battery life
- Operating temperature range -20 to +55 degrees C
- Battery: Lithium-Ion / Lithium-Polymer

## COMPLETE WITH

- Multi-country power charger
- In-car charging adaptor
- 2 Antennas
  - Omnidirectional antenna
  - Directional antenna
- USB cable for survey download and charging
- Tough carrying case for the complete kit
- Quick start guide

## Complete kit at your disposal

The SNYPER-LTE+ Spectrum and the SNYPER-LTE Graphyte come complete with directional liveSCAN antenna and connecting RF cable. The liveSCAN antenna connects to the SNYPER via the RF cable and replaces the normal stubby antenna. The SNYPER with liveSCAN antenna connected enables the user to 'point' the antenna with one hand and view the graphical display on the SNYPER with the other hand to pin-point direction from which the maximum signal is coming from, all in real time.



SNYPER-LTE+ Spectrum with liveSCAN antenna

# SNYPER-LTE FAMILY

## PRODUCT COMPARISON CHART

	EU Variants			USA Variants	
COVERAGE	SNYPER-LTE+ (EU)	SNYPER-LTE+ Spectrum (EU)	SNYPER-LTE Graphyte (EU)	SNYPER-LTE+ (USA)	SNYPER-LTE Graphyte (USA)
Cellular Frequency Bands	<b>2G</b> - 900/1800 MHz <b>3G</b> - 900/2100 MHz <b>LTE</b> - 800/900/1800/2100/2600 MHz			<b>2G</b> - N/A <b>3G</b> - 850/1900 MHz <b>LTE</b> - 700/850/1700/1900 MHz	
SURVEYS, SCANS & ANALYSIS	SNYPER-LTE+ (EU)	SNYPER-LTE+ Spectrum (EU)	SNYPER-LTE Graphyte (EU)	SNYPER-LTE+ (USA)	SNYPER-LTE Graphyte (USA)
SURVEYS: Ability to set signal thresholds to view within summary page	Yes	Yes	Yes	Yes	Yes
SURVEYS: Saved survey storage	1 Survey	50 Surveys	100+ Surveys	1 Survey	100+ Surveys
SURVEYS: USB download of saved surveys (CSV & HTML)	Yes	Yes	Yes	Yes	Yes
SURVEYS: SIM free surveys	Yes	Yes	Yes	Yes	Yes
SURVEYS: Automatic, sequential surveys and logging	No	No	Yes	No	Yes
SCANS: Ability to "lock-on" to single provider	No	Yes	Yes	No	Yes
SCANS: Continuous liveSCAN with real time graphical display	No	Yes	Yes	No	Yes
SCANS: Continuous liveSCAN with data logged and saved	No	No	Yes	No	Yes
ANALYSIS: HTML and CSV representation of results	Yes	Yes	Yes	Yes	Yes
ANALYSIS: Mapping Portal - displays surveyed basestations on a map*	Yes	Yes	Yes	Yes	Yes
SURVEY RESULTS - 2G & 3G	SNYPER-LTE+ (EU)	SNYPER-LTE+ Spectrum (EU)	SNYPER-LTE Graphyte (EU)	SNYPER-LTE+ (USA)	SNYPER-LTE Graphyte (USA)
ARFCN / dBm / % / RSSI / MCC / MNC / CellID / LAC	Yes	Yes	Yes	Yes	Yes
BSIC (2G ONLY)	Yes	Yes	Yes	Yes	Yes
RSCP / ECIO / SCR (3G ONLY)	Yes	Yes	Yes	Yes	Yes
Band / UL (MHz) / DL (MHz)	Yes	Yes	Yes	Yes	Yes
SURVEY RESULTS - 4G	SNYPER-LTE+ (EU)	SNYPER-LTE+ Spectrum (EU)	SNYPER-LTE Graphyte (EU)	SNYPER-LTE+ (USA)	SNYPER-LTE Graphyte (USA)
EARFCN / dBm / % / RSSI / MCC / MNC / CellID / TAC / PhyCellID	Yes	Yes	Yes	Yes	Yes
RSRP / RSRQ / BW	Yes	Yes	Yes	Yes	Yes
Band / DL (MHz) / UL (MHz)	Yes	Yes	Yes	Yes	Yes

\*Mapping Portal is a paid service offered by Siretta, and can be accessed via the HTML reports.



Siretta is a leading manufacturer of wireless IoT products and overall solutions, specialising in technology used as building blocks for the Internet-of-Things (IoT) landscape. Siretta's portfolio encompasses wireless modems, industrial routers, remote monitoring and cloud services in addition to cellular signal analysers.

To complete the wireless range, Siretta has the widest range of antennas, cable assemblies and adaptors.

**Siretta Ltd**

Basingstoke Road  
Spencers Wood  
Reading  
RG7 1PW  
United Kingdom

Tel: +44 (0)118 976 9000

email: [sales@siretta.com](mailto:sales@siretta.com)

[www.siretta.com](http://www.siretta.com)